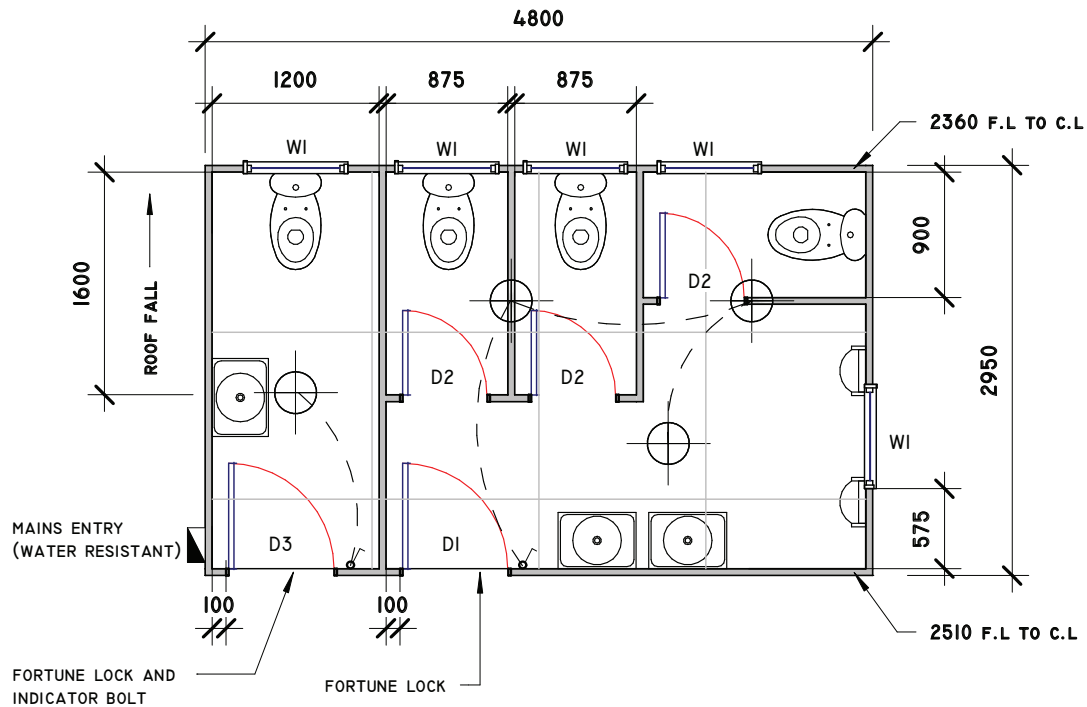


# > Male Female Toilet

4.8m x 3.0m

Plans and images are indicative only. Products may vary according to availability.

1 Floor Plan



## SPECIFICATIONS

2 Perspective



- > 50mm external Bondor wall panel
- > 50mm internal Bondor wall panel
- > 50mm Bondor roof panel on 3.0 degree pitch
- > 17mm H3.1 T&G plywood flooring on joists at 600 crs.
- > Duragal steel baseframe
- > Vinyl floor covering - covered 150mm
- > All glazing to be single glazed
- > W1 - 750w x 400h awning window - obscure glass
- > D1 - 760w panel door w. deadbolt/fortune latch (non-lock)
- > D2 - 610w panel door
- > 12w button LED light as shown
- > 15L hot water cylinder
- > 120mm covered vinyl
- > Electrical certificate of compliance
- > All light switches & power outlets in wet areas to be IP rated