



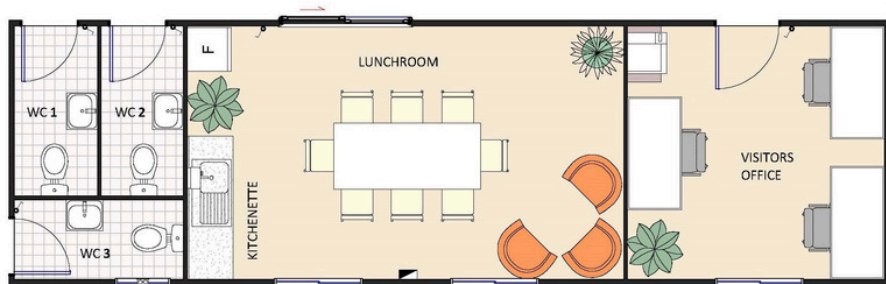
Make space work for you

Crammed into an out-of-date working space and need extra room? Expanding the team and need a fast solution?

Portacom's office complex includes everything you need to get your workforce up and running. Whether it is 10 people to 200, we have a layout to suit your site's footprint and workforce's needs.

Our team will work with you to select, mix 'n match the modules to create a space which works for you. You can combine open plan offices with meeting rooms, private offices, receptions, staff amenities, IT and plant rooms and more, with plenty of options for flooring and internal design.

Choose Your Configuration



DISCOVER THE OPTIONS

Standard Features You'll Love in every Portacom Commercial Office

- Comfort underfoot with durable, easy-to-clean vinyl tiles
- Quieter spaces thanks to acoustic wall linings that reduce noise
- Clean and modern interiors with flexibility in layout and design
- Energy-efficient comfort with double-glazed windows to keep heat in and noise out
- Built-in safety – pre-wired to support standard fire alarm systems
- Thermally efficient to meet H1 compliance and help regulate indoor temperatures.

Leave the logistics to us, and keep your focus on education.



**SUSTAINABLE
DESIGNS**



**MINIMISE
DISRUPTION**



**SPEED
TO SITE**



**TRANSPORT
& INSTALL**

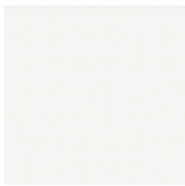
With experienced local installation teams, we have the capability to deliver every time, everywhere.



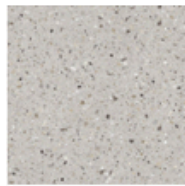
Select your colour palette

Once you have selected your layout, we have colour options for benchtops, carpets and wall coverings to make the space warm and inviting.

Most popular benchtop colours



White



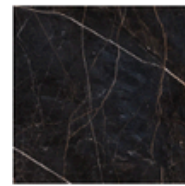
Riverstone



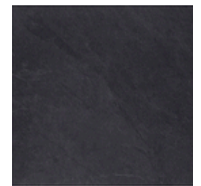
Kiwi-Oak



Grey Moon



Granite



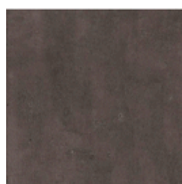
Slate



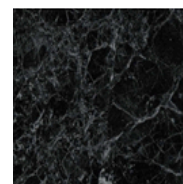
Sonora Black



Sonora White



Dark Concrete



Dark Marble

Most popular vinyl flooring colours



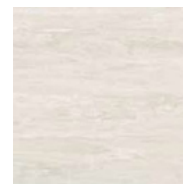
Pumice



Fossil



Flint

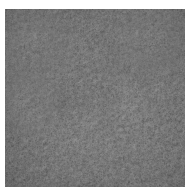


Porcelain

Most popular Vertiface wall colours



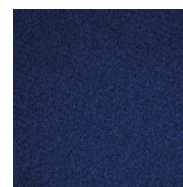
Electric Blue



Flatiron



Granny Smith



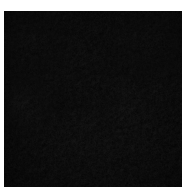
Ink



Koala



Myst



Petronas

Who is Portacom?

Getting the right space for your project in New Zealand is easy with Portacom. We're all about providing modern, modular solutions that help people and communities thrive. Need something fast, flexible, and reliable? We've got you covered, serving everyone from government and infrastructure to healthcare, education, and even agribusiness, nationwide across both the North and South Islands. You are never far from a Portacom Service Centre that can tailor to you.

Whether you need temporary hire buildings like comfy workforce accommodation, classrooms, or even medical facilities, or you're after a permanent modular space designed and built right here in NZ, we make it easy. With one of the biggest hire fleets and manufacturing hubs on both islands, we can reach you anywhere. From initial design to getting approvals and setting up on-site, our decades of experience mean a complete, easy turnkey solution for you.

Service Centres

Wiri
Head Office & Production
212C Cavendish Drive
Wiri, Auckland 2104

Runciman
Hire Service Centre
1187A Great South Road
Runciman, Auckland
2578

Trentham
Hire Service Centre
31A & 33B Thomas Neal Crescent
Trentham, Upper Hutt 5018

Rukuhia
Hire Service Centre
61 Clearway Rise
Rukuhia 3282

Bell Block
Hire Service Centre
Cnr De Havilland Drive & Auster Place
Bell Block, New Plymouth 4312

Tomoana
Hire Service Centre
117a Elwood Road
Tomoana, Hastings 4172

Harewood
Hire Service Centre & Production
1-3 Lakes Way (Off Greywacke Road)
Harewood, Christchurch 8051



0800 476 782

portacom.co.nz